

# Michigan Reach Out!

Linking College & Community  
Mentors with Youth

Making a Difference ...  
One Child at a Time

January 2005

Vol. 2, No. 1

## In This Issue

Fall 2004 Events .....	1
<b>Reach Out!</b> Service Awards .....	2
Sharing Our Model .....	2
Elementary Family Leaders .....	3
Scarlett MS Family Leaders .....	4, 6
Program Adaptations .....	5, 8
Our Mentors for the Past Year .....	6
Our Board of Directors .....	7
Our Donors .....	7
Our In-Kind Supporters .....	7
Program Adaptations .....	8
<b>MRO!</b> Statistics .....	8

**Michigan Reach Out!**  
5575 West Liberty  
Ann Arbor, MI 48103  
734.747.9280  
lasovage@ameritech.net  
www.reachoutmichigan.org

**We are seeking board  
members and partners  
to help us raise  
sustaining funding**

## Fall Events

### Back to the Farm!

On Sunday, October 24, 72 children, mentors, and family members enjoyed a day at the Burkhardt Farm in Manchester. They got up close and personal with horses (including this summer's new baby), miniature horses, the fainting goat, donkeys, a rabbit, a pet rat, dogs, and kittens. They also enjoyed pumpkin decorating and outdoor games.

Hostesses and **Reach Out!** volunteers Rachel and Amber Burkhardt were also featured this fall in the October 23rd "Lending a Hand" section of the *Ann Arbor News*.

### Thanksgiving Potluck

On Monday, November 8, 212 mentors, children, parents, and other relatives—from both elementary and secondary programs—gathered at the Scarlett Middle School cafeteria for our first Thanksgiving potluck. All brought dishes to share and then stayed to play scores of board games together. This kind of informal social gathering has long been requested, and a great time was had by all.

### December Gala

On Monday, December 6, we hosted 88 mentors, children, siblings, parents, and grandparents for cupcake and cookie decorating, gym games, and family board games at Scarlett.

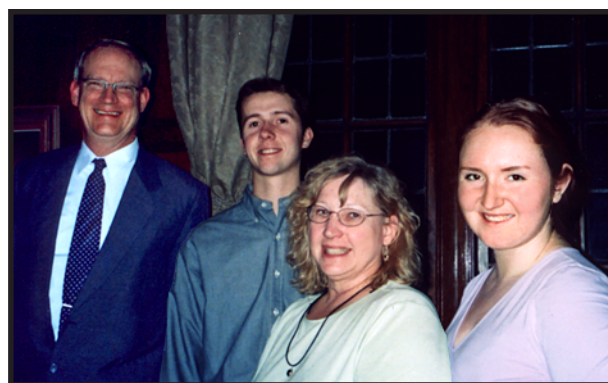


## Reach Out! Receives Ginsberg Service Awards

The University of Michigan's Ginsberg Center recognized *Reach Out!* with three separate "2003–2004 Awards for Community Service and Social Action" at a ceremony on April 1, 2004.

Scarlett Mentor and University of Michigan student CJ Johnson received recognition for "**Outstanding Community Impact - Student Award.**" CJ is in his third year as a volunteer mentor at Scarlett Middle School. While serving as the president of his fraternity (*Pi Kappa Alpha*, a long-time *Reach Out!* partner), he has found the time to serve as vice president of the *Michigan Reach Out!* board, as well. His tremendous commitment of time and leadership exceeds any reasonable expectation for a university student.

*Reach Out!* itself received the award for "**Outstanding Community Impact - University Organization.**" During its 9th year of serving Ann Arbor children and teens, more than 125 *UM Reach Out!* volunteers provided mentoring and science clubs at Scarlett Middle School, Pattengill Elementary School, Arrowwood Hills Community Center, Bryant Community Center, Hikone Recreation Center, North Maple Community Impact Center, and Pinelake Village Community Center for



Bill Schultz, CJ Johnson, Rachel Burkhardt, Bridget Briley

more than 200 children. Bridget Briley, founding student board member for *Michigan Reach Out!*, fifth-year volunteer, and 2002 Outstanding Student honoree, accepted the award for the organization.

Professor William Schultz received "**Outstanding Faculty Member**" award for his steadfast commitment as faculty advisor to the *UM Reach Out!* organization and as the leader of year-round science club activities at North Maple Community Impact Center. Further, Schultz was a founding member of the non-profit *Michigan Reach Out!* board of directors.

## Sharing Our Model

### Connecticut Governor's Fifth Annual Mentoring Partnership Conference

In Cromwell, CT, on Sept. 27, 2004, Director LaSovage presented to over 65 people the *Reach Out!* model for "world of work" and career mentoring. The Governor's Prevention Partnership chose the *Reach Out!* program for statewide replication. Corporate, higher education, K–12 and community center leaders enjoyed learning



about our model to link post-high school training and educational information to children and mentors, as well as business and industry resources to communicate what jobs and careers are like. LaSovage will return in May to provide workshops for partners on how to establish, implement, and evaluate programs.

### Mentor Michigan Providers Council

LaSovage was selected to serve on this council for a two-year term. The Michigan Community Service Commission, along with the Governor and First Gentleman Dan Mulhern, are striving to better link and promote mentoring throughout our state. The council determined goals and priorities at the October 2004 meeting.

### Chicago Tutor-Mentor Connection Conference

Plans to present workshops on career mentoring and on school-based academic mentoring were canceled due to Director LaSovage's hospitalization in November.

## 2004-2005 Elementary Program Family Leaders:

### Pinelake Village Community Center

#### Jackie Perun

Hometown: Rochester, MI  
Major: Psychology  
Junior, U. Michigan

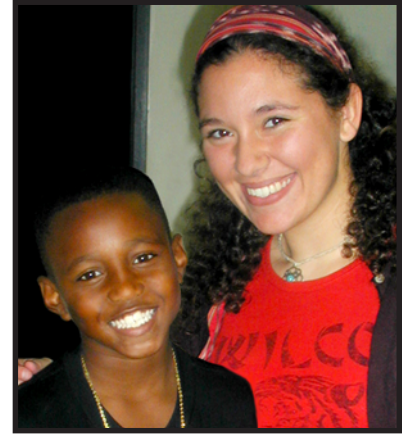


"I've always enjoyed working with kids, so *Reach Out!* seemed like a good opportunity when I got involved as a mentor last year.

This year I came back as a family leader because I realized how truly rewarding mentoring can be not only to the kids, but also to the mentors, and I wanted to help more people become a part of this program."

#### Laura Ochoa

Hometown: Madison, WI  
Majors: Latin American and  
Caribbean Studies,  
Spanish  
Junior, U. Michigan



"Working with kids makes a huge difference in my life. Being a mentor, and the opportunity to make a difference—no matter how large

or small—in a child's life is a great thing. I love seeing the smiles and enthusiasm on the kids' faces when we come to Pinelake each week. Monday is my longest, busiest day, and coming to Pinelake is the highlight. My mentee's constant energy gives me energy and keeps me positive for the coming week."

### Mitchell Elementary School



#### Katie Johnson

Hometown: Washington, DC  
Major: Undecided  
Freshman, U. Michigan

"I love working with the kids at Mitchell. It is very rewarding to be able to give back to the Ann Arbor community. I am so happy to be able to mentor kids and get them interested in math and science—their curiosity is very refreshing. Working with the kids is always the highlight in my day!"

#### Jacqueline Kontry

Hometown:  
Rochester  
Hills, MI  
Major: English  
Junior, U.  
Michigan



#### "Reach Out!"

is a way for me to give back to the

community, as well as to connect with younger members of the community. It is an opportunity to affect the lives of children, inspiring them to do well and encouraging them to make dreams for their futures come true."

### Other Elementary Family Leaders:

*Rohit Narayan & Todd Sarbaugh  
at Hikone Recreation Center  
(and Deb Hamann, of course)*

## 2004-2005 Scarlett Middle School Family Leaders:

### **Emily Kennedy**

Hometown: Ann Arbor, MI

Majors: Art History, Pre-Dental

2nd year, U. Michigan



“To me, *Reach Out!* is a beautiful opportunity to escape campus life and to give

part of myself to another. It helps me get outside of myself and think about stuff that I might not otherwise. The families I have encountered appreciate so much of what we do, and that makes me feel wonderful.”



### **Sandra Haber**

Hometown: Bloomfield Hills, MI

Majors: French and Communications

Sophomore, U. Michigan

“*Reach Out!* is the time of the week when no matter how things are going and how I feel going into Scar-

lett, at the end of the hour I leave with the best feeling in the world. It is really amazing how such little time is so special to us as mentors as well as to our mentees. We really are creating meaningful relationships!”

### **Gwen Hekman**

Hometown: Holland, MI

Major: Economics

Senior, U. Michigan



“*Reach Out!* has been a real opportunity for me. I have met the best group of people by belonging to this organization. There is a real difference between my relationships with fellow *Reach Out!* mentors and those with other friends and acquaintances. *Reach Out!* fosters a real sense of community, which is rare in any college setting, but especially at a school the size of Michigan.”

### **Candice Korkis**

Hometown: Sterling Heights, MI

Majors: Psychology and Sociology

Junior, U. Michigan



“*Reach Out!* means realizing that we have the ability to make a difference in someone’s life, and that that opportunity is not only priceless, but rewarding. *Reach Out!* is humbling, satisfying, and an asset to anyone fortunate enough to be a part of the program.”



### **Shara Cherniak**

Hometown: Farmington Hills, MI

Major: Elementary Education

Sophomore, U. Michigan

“*Reach Out!* means making a friend and joining a family—I have become close friends with my mentee, and I now have a family in other mentors and their mentees. It is a really special place to be.”

## **Other Scarlett Family Leaders:**

***CJ Johnson, Ryan Neesam, Natassia Polyne  
Julia Power, Suzanne Torrenza***

### **Kelly Anderson**

Hometown: Grand Rapids, MI

Major: English

4th year, U. Michigan



“*Reach Out!* is such a great way to connect with children beyond a superficial level and get to know them personally. It’s been tremendously rewarding to participate in my mentee’s life and to watch her progress academically and emotionally.”

## Program Adaptations for 2004-2005

**Reach Out!** programming has always evolved with the needs and desires of participants and host sites, but this year sees more changes than most. Our continuing shortage of funding prompts both a reduction in what we can ask of volunteer coordinators and a renewed determination to make as much of a difference as possible in the lives of both children and mentors. Further, we are committed to documenting programs and outcomes and to sharing our model with others, so that we leave something behind if we are unable to continue.

### Family Leader Structure

With no funds for program coordinators or site leaders, we decided to organize mentors and children at all sites within small Family Groupings. Each is led by a volunteer Family Leader—a mentor who has been with our programs at least one year and who made the commitment to attend bimonthly Team Meetings for ongoing training, planning, and sharing.

In addition, Scarlett has volunteer leaders to promote community service, the technology infusion project, the NASA project, and a Scarlett **Reach Out!** newsletter.

### Professional Development

Our professional development for mentors has expanded, with regular workshops on relevant topics. We are extremely pleased at how many of our folks make this a priority in their busy lives. For example 64 community volunteers



spent a lovely fall afternoon on Sept. 12 reviewing our mission, goals, and plans for the year.

### Documenting Outcomes

We are seriously working with Scarlett Middle School to conduct quantitative research regarding the children we serve. Our goals are improvements in Attitude, Attendance, and Achievement. CJ Johnson developed a new spreadsheet for tracking measures of these parameters. He and Julia Power are working with Principal Carol Shakarian on the quantitative data.



He and Julia Power are working with Principal Carol Shakarian on the quantitative data.

### Intentional Mentoring

We are focusing on true intentional mentoring at all sites this year, including the elementary school and community center sites, where our hands-on science clubs will match mentors with the same children for more meaningful relationships.

As part of the effort to deepen relationships, our Family Leaders are planning more field trips, outings, and all-program social gatherings, such as our successful Thanksgiving Potluck and December Gala. Volunteers have long wanted more opportunities to get to know one another, their children, and their children's families.

### Collaborations

We are reaching out to Turning Points, the Center for Collaborative Education, and the Association of Illinois Middle-Level Schools (AIMS). Scarlett chose Turning Points for its reform consultant in the next three years. Director LaSovage served on the school's Design Team and remains on the Implementation Team. She attended the three-day AIMS conference with Scarlett staff in August and met the regional AIMS Director, Deb Shrock. There may be a possibility for **MRO!** to work with these groups as a pilot/model program, or we may be able to merge with or be "taken over" by one of these groups.

*(Programming continued on page 8)*

# Who Stands Behind Us

## Meet Our January-December 2004 Mentors!

Jon Acker	Jamie Coleman	Sandra Haber	Jacqueline Kontry	Laura Padalino	Koby Simantob
Baxter Allen	Eli Cooke	Tahee Han	Michael Konwiak	Abhaya (Abhi) Pandit	David Simison
Kelly Anderson	Rachel Craft	Laura Harley	Candice Korkis	Marci Paskowitz	Stephen Sinas
Brook Anton	Emily Criste	Gwen Hekman	Samantha Lamberti	Jordan Pasqualin	Katie Skinner
Jessica Baker	Angeli Dahiya	Eileen Helm	Jennifer Lamoureux	Neal Patel	Shecari Sorrells
Crystal Baker-Burr	Geoff Dietrich	Lauren Hirt	Hosup Lee	Justin Paul	Stefanie Stachura
Mike Bakun	Ashleigh Dowell	Annabel Holsbeeck	Jane Lee	Paul Peng	Jasmine Stone
Rick Bastien	Lauren Eckert	Joanna Hooten	Angie Leenhouts	Louise Peterson	Ethan Street
Beth Belloli	Kelly Edwards	Elizabeth Houghton	Brandon Levey	Jackie Perun	Marta Sylvia
Ralph Beuhler, Jr.	Laura Fischer	Jenny Huang	Miriam Levine	Alex Pevzner	Katie Thomas
Ralph Beuhler, Sr.	Robert Fowler	James Hunnicutt	Sook Fen Lew	Prasad Phatak	Suzanne Torrenga
Caren Bieterman	Nicole Fretter	Werlson Hwang	Chris Lundine	Natassia Polyne	Anne Uible
Josh Boeve	Courtney Fritz	Brigid Jennings	Augustus Makris	Kate Porpatich	Abby Vallabhaneni
Simon Bogdanowicz	Andy Frolich	Adam Johnson	Lance Maynard	Julia Power	Justin Vandeputte
Max Boigon	Pearl Fung	CJ Johnson	Charles McCarren	Brendon Quilter	Andy Van Sumeran
Casey Bourke	Wai Fung Fu	Katie Johnson	Margaret McCarthy	Shawna Rafalko	Jen Vassil
Bridget Briley	Emily Gansel	Carl Jones	Meaghan McElroy	Natalie Ramirez	Brian Vincent
Liz Brunk	Nimmy George	Becca Juliar	Adrienne Mejia	Priya Rao	Jane Viventi
Amber Burkhardt	Christina Gerazonis	Brian Kamstra	Oswaldo Mendoza	Kelsey Reed	Emily Vogel
Laura Butler	Julianne Gonda	Sarvin Kashani	Kristen Metzger	Kirk Rzasza	Shaan Wadhwa
Laura Butler	Tim Goodman	Emily Kennedy	Neal Mugve	Stephen Sanford	James Waldeck
Hyewon (Leigha) Chang	Tommy Goodwin	Shravya Kidambi	Eddie Muransky	Todd Sarbaugh	Mandi Walker
Shara Cherniak	Lisa Goulet	Robin Kim	Olga Mustata	Matt Schopfer	Julia Wang
Chung Cho	Rachel Goulet	Danielle Kinkel	Rohit Narayan	Neha Sekhri	April Warren
Jennifer Christenson	Katherine Gregg	Chelsea Klemens	Charu Nautiyal	Danielle Sgambati	Michele Willard
Amy Chung	Kristen Grimshaw	Alison Kolody	Ryan Neesam	Ardaman Pal Shergill	Malaia Williams
			William Nelson	Alan Sheyman	Lisa Yang
			Jerry Nordblom	Uday Shirish Trivedi	Mina Yang
			Laura Ochoa	Janie Shreve	Eric Yu
			Peter On	Heather Siegelhelm	Alice Zheng
			Maggie Paczkowski		Denise Zheng

*Please tell us if we missed you!*

*Scarlett Family Leaders Ryan Neesam & Natassia Polyne*



*Scarlett MS Family Leaders CJ Johnson & Julia Power*



  
 Ann Arbor Area  
 community foundation  
 For good. For ever.



# Who Stands Behind Us

## Our Board of Directors

**President:** Serina Brown, University of Michigan staff, past provider and consumer (as a parent) of **Reach Out!** program services

**Vice President:** CJ Johnson, University of Michigan student; multi-year volunteer, past site leader, current family leader

**Secretary:** Gwen Hekman, University of Michigan student; multi-year volunteer, past site leader, current family leader

**Treasurer:** Lance Maynard, University of Michigan graduate; M.B.A. with Finance Specialization from Walsh College; currently pursuing C.P.A.; past **Reach Out!** volunteer

**Directors:** Aarti Raheja, University of Michigan medical resident; UM graduate; **UM Reach Out!** alumna: cofounder, multiyear volunteer, program director

Jeannine LaSovage, Executive Director; **Reach Out!** cofounder; original **UM Reach Out!** advisor

**Student Auxiliary:** **UM Reach Out!**

## Our Donors, 12/2003-11/2004

**Total Financial Support:** **\$57,643**

**Foundation Gifts** **\$11,700**

Colonial Square Cooperative  
Grove Family Foundation  
J & E Slavík Foundation  
Pfizer Foundation (matching)

**2004 Proposals and Grants** **\$36,600**

City of Ann Arbor  
Downtown Ann Arbor Kiwanis  
Pfizer Corporation

## Individual Gifts

**\$9,343**

John & June Bassett  
Cheryl Dale Beck  
Matilde Benacquista  
Jim & Sue Bristol  
Letitia Byrd  
Stephen & Stephanie Cherniak  
Dave & Colette Dempsey  
Barbara Dilisio  
Ralph Dilisio  
Abra Essad  
Kathy Fojtik  
Anthony & Beverly Fritz  
Maria Gismondi  
Stefania Gismondi

Mary Elizabeth Graham  
Bob & Judy Kegerreis  
Thomas & Sally Klein  
Nell Kuhnmuench  
Walt & Marilyn LaSovage  
Amanda Lindow  
Vickie Matthews  
Lance Maynard  
Kathleen McAuliffe  
Tim & Michelle McCormick  
John & Meredith Meeks  
Louis & Kelli Meeks  
Sandra Meeks  
Michael & Leslie Morris

Gerald Nordblom  
Don & Marie Olsen  
Herbert Píilo  
Madelyn Satz  
Martin & Miriam Satz  
Edith Semark  
Dennis & Susan Shackelford  
Karl & Sandra Shargabian  
Clifford & Ingrid Sheldon  
Linda Sietz  
Max & Sue Supica  
Rosanna Toth  
Joan Toy  
Randy & Rita Whitcomb  
Lura Williams

## Our In-Kind Support

Bob Kegerreis produced a seven-minute professional documentary on **Michigan Reach Out!**

Tom McCartney prints brochures and newsletters.

Linda Chapekis provides accounting and tax preparation services.

The First United Methodist Church allows use of their facilities for meetings, training, potlucks.

Scarlett Middle School allows us to use copiers, a laptop computer, and the building for meetings, in-services, etc. They also conduct background checks for staff and volunteer mentors.

*(Programming continued from page 5)*

The University of Michigan College of Engineering continues to work within Scarlett. **MRO!** sprang from a National Science Foundation Science and Technology Center there, and another NSF research center partners with Scarlett now. We hope to find ways to work on campus again with such science centers, which typically try to promote math and science literacy and technical careers through K–12 outreach.

Scarlett Principals Carol Shakarian and Bill Harris continue to be generous with in-kind support and grateful for our volunteers' assistance. Although they have asked for funding to support us, that is very unlikely in today's atmosphere of budget cuts and K–12 funding austerity at the state level.

### **Brown Bag Workshops**

We are offering workshops for mentors, parents, and grandparents to better help us encourage and support our children with their academics and learning. Surveys will determine the days and times, during which participants may bring a lunch or dinner. Topics offered during the coming semester will be Learning Styles; Intentional Dialogue Skills & "I" Messages; 3 Levels of Learning; Keys to Healthy & Positive Youth Development; Study Skills; and any other topic requested by participants.

### **World of Work**

As part of our focus on motivation and planning for the future, our World of Work program during late winter and spring will help children explore passions, gifts and talents; offer them personality inventories; research diverse fields and careers that they might love; organize family field trips to colleges and workplaces; and offer job shadowing. Research clearly shows that our children need to see the relevance of school work to their real lives and to their post-high school plans. Few have much of a clue what work and careers are out there for them, and very few have really thought about what they love to do and what careers would match their passions.

We need help with all of this! We are hoping to find Washtenaw Community College instructors and students to facilitate a Saturday visit late in January to learn about programs, training and coursework, as well as about articulation agreements with EMU and UM for those who want to continue for a four-year degree. Please contact Jeannine (lasovage@ameritech.net) or Margaret Green—mother of a child in our Scarlett mentoring program and instructor at WCC (megreen@wccnet.edu), if you can help. We hope to have many options for our children, mentors and parents/grandparents to choose from on that day.



### **Reach Out! Accomplishments**

#### **Secondary Program**

Fall 2003	62 matches
Winter 2004	53 matches
Fall 2004	77 matches

#### **Elementary Program**

<b>2003–2004</b>	<b>Mentors</b>	<b>Children</b>
Arrowwood	8	26
Bryant	9	24
Hikone	12	12
Pinelake	14	25
Pattengill	14	114

<b>Fall 2004</b>	<b>Mentors</b>	<b>Children</b>
Hikone	17	19
Mitchell	7	14
Pinelake	18	20